



Compassion Village
Tiny homes, Big dreams.



2019 Business Plan

VISION

Ending Homelessness 1 Tiny Home at a Time



The information provided is the property of e49 Foundation and should not be reproduced or copied without written permission from The e49 Foundation.

SUSTAINABLE SOLUTION TO HOMELESSNESS

- Crowd Sourced Funding Solution

- \$10,000 = 1 Home = 1 Life
- 2 Sponsors per Home



Compassion Village
Tiny homes, Big dreams.

- The e49 Foundation Manages, Coordinates and Equips/Trains Leaders for every Village.
- Sustainability is achieved through ongoing rents and Social Enterprise Revenue which means after initial investment every Village is sustainable without any further fundraising required.

The information provided is the property of e49 Foundation and should not be reproduced or copied without written permission from The e49 Foundation.

What is Compassion Village?



Compassion Village
Tiny homes, Big dreams.

- Master Planned Tiny Home Community for people experiencing Homelessness with 24/7 site management and case management to connect residents to wrap around services and employment.
- Tiny Home Villages are funded through Private donors and investors with each Tiny Home on Wheels (THOW) being capped at \$10,000 for materials and approximately \$10,000 per home/resident for labor and resident services. (Phase 2 permanent homes will be approximately \$35,000 per home)
- The E49 Foundation is the church sponsor. The e49 TCH Foundation is the nonprofit operation arm and Compassion Enterprises is the Social Enterprise entity.

ORGANIZATIONAL STRUCTURE

The e49
Foundation



The e49
Community H&H
Foundation

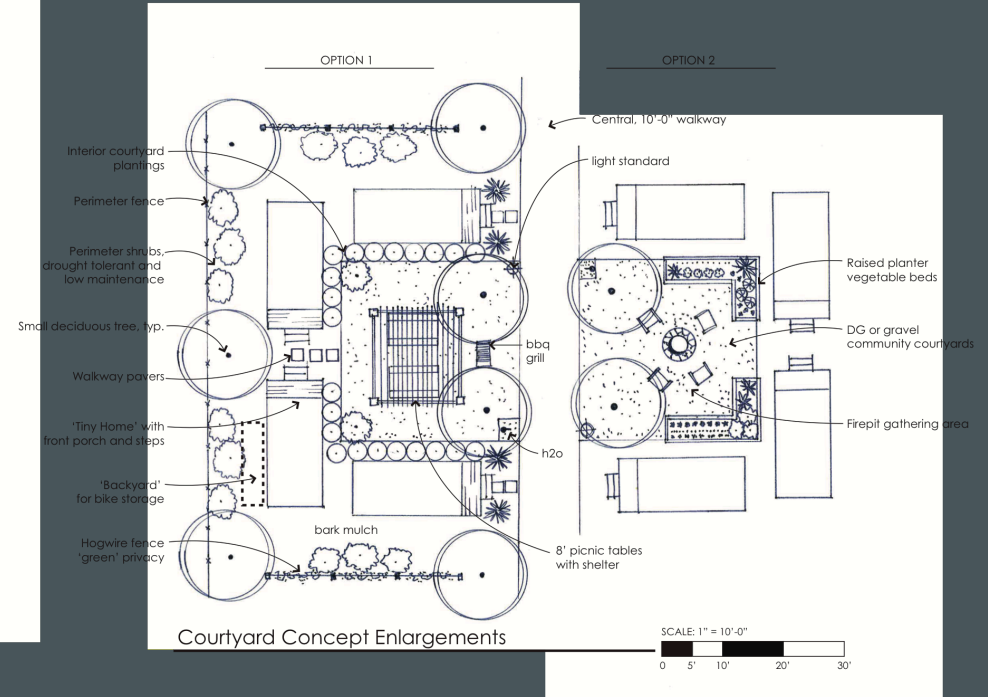
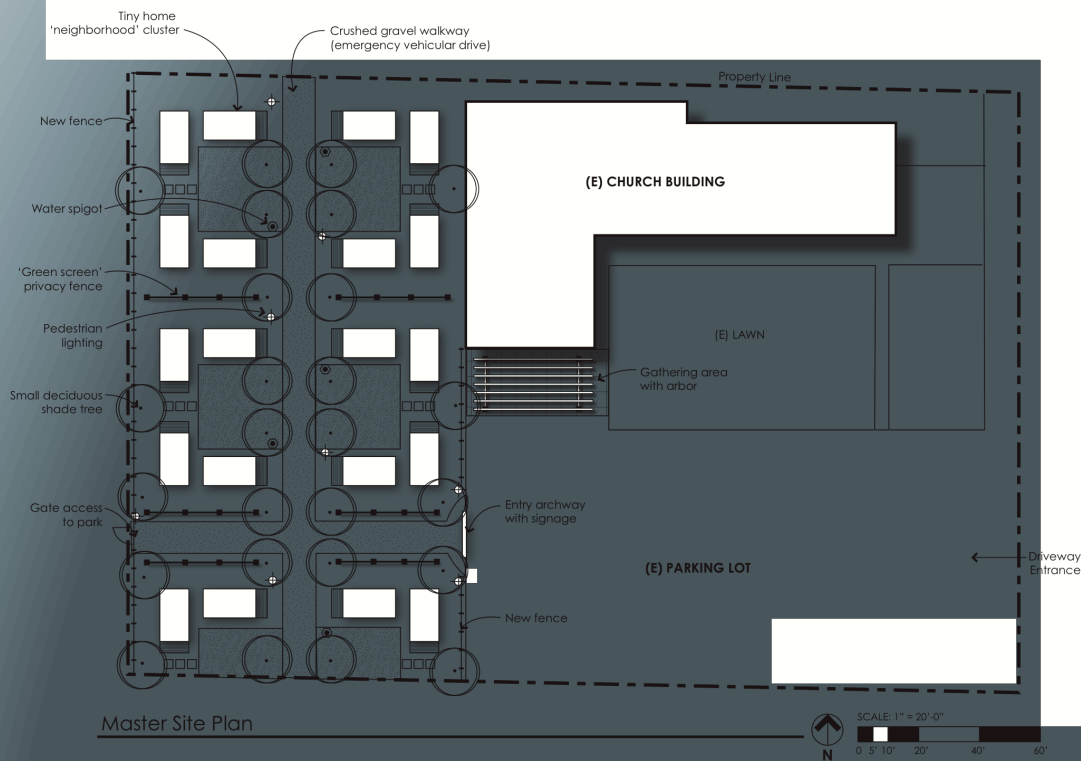
Compassion
Enterprises Inc.

The information provided is the property of e49 Foundation and should not be reproduced or copied without written permission from The e49 Foundation.

INTERDEPENT PROBLEMS REQUIRE INTERDEPENDENT SOLUTIONS - Housing

- HOUSING is the first priority
- Low Barrier entry
- Residents can stay as long as they need to
- Assess Needs - The first 90 days is focused on getting the resident settled, rested, connected to resources and case management
- Connect to Resources and Case Management





NeoTeric
Design Group

Lea Allen, ASLA
Landscape Architect CA #5725

leajlene@gmail.com | 916.662.0355 | 2961 34th st. sacramento, ca 95817

The information provided is the property of e49 Foundation and should not be reproduced or copied without written permission from The e49 Foundation.



The information provided is the property of e49 Foundation and should not be reproduced or copied without written permission from the e49 Foundation.

INTERDEPENT PROBLEMS REQUIRE INTERDEPENDENT SOLUTIONS - Community

- Community Engagement
- Volunteer Opportunities for residents
- Weekly community dinners and social events
- Weekly Case Management based on resident goals
- Weekly community meetings with residents to discuss how things are going in the community, resident recommendations for changes and conflict resolution



INTERDEPENT PROBLEMS REQUIRE INTERDEPENDENT SOLUTIONS - Enterprise

- Vocational Training
- Social Enterprise Employment
- Startup Support for Small business
- Residents often times have had a skill at some point but lost opportunities because of poor life choices. Retraining and/or assisting them in picking back up where they left off is often a desired outcome
- Social enterprise solutions allow for them to work under supervised conditions as they continue to work through their healing and recovery



Phase 1 Tiny Home Villages



- Phase 1 Tiny Home Communities are designed to be a quick solution to housing by using existing zoning, building and infrastructure
- Existing churches that have underutilized land or buildings are an ideal solution. Commercially zoned residential hotels and RV Parks are also examples of potential phase 1 Village sites.
- Potential Phase 1 Village sites require approximately 3500 square foot building with existing plumbing and electrical that can accommodate community showers, bathrooms, kitchen, laundry and living.
- Approximately 20, 8x16 foot Tiny Homes can fit on 1/2 acre site

Phase 2 Housing – Tiny Home Communities



- Permanent Housing
- Community Center/Resources
- Homes are on Foundations with electrical and plumbing
- Affordable Rents/Lease to own options
- Entrepreneurship/Executive Mentors
- Social Enterprise Employment/Franchise opportunities
- Sites can be Residential or Commercial sites with dorm approach

Social Enterprise Solutions

- Sustainable Enterprises that both employ residents and help fund ongoing vocational training
- Compassion Tiny Home Production/Building
- Compassion Food Trucks
- Compassion Catering/Cafe
- All three of these Enterprises are attainable solutions and are a natural progression because each Village is a potential customer of the products and services



Compassion Village
Tiny homes, Big dreams.

The information provided is the property of e49 Foundation and should not be reproduced or copied without written permission from The e49 Foundation.

HISTORY



- February 2017 Launch
- First 4 Homes committed to April 2017
- First 4 Homes on Del Paso site September 2017
- Model Home completed September 2017
- Cosmetic Rehabilitation to church building by September 2017
- First two residents moved into site September 2017
- Four residents by end of 2017
- All 20 Tiny Homes for Del Paso site committed

HISTORY CONTINUED



- 2018 Hired two 24/7 site managers
- Facilitated ongoing home builds through churches
- Measured results and revised program materials, designs and systems
- Hired evidence based case management
- Revised church builds to include maximum 90 day build times
- Secured partnership with Prison Industry Authority for production site
- Secured partnership with CDCR for vocational training build site
- 10 Homes build and onsite with residents

BUILD, MEASURE, LEARN



- Church, Business and Community Builds are GOOD but were slow in the beginning.
- Original funding was tied directly to Housing and it was difficult to get initial funding for infrastructure and services.
- Developing material suppliers, delivery and quality control took time and was being developed as we launched.
- Pioneering and advocating zoning, building and standards codes and changes with City, County, State and Federal officials was necessary.
- Ultimately though, we were able to proof the model! Now what?

SUSTAINABILITY



• 2019 GOALS and BENCHMARKS

- Complete Del Paso Village and make it a model for the Region
- Complete upstairs School/Dorms
- Update downstairs Community Center/Commercial Kitchen
- Complete landscaping, fencing, signage, conditional use permit
- Launch Compassion Enterprises – Food Truck
- AIA Design Competition kicked off February 21 and is asking for designs of Tiny Homes on Wheels (THOWS) and/or ADU's for The e49 Foundation so that we can have more design choices moving forward.

SUSTAINABILITY - 2019 Budget

\$370,000



- Tiny Home Completion – 10 @\$10,000
- Complete upstairs School/Dorms – Electrical, Flooring, Drywall, Windows, CH&A, Water Heater, Baths and Kitchen \$100,000 materials plus labor
- Update downstairs Community Center/Flooring, Kitchen – \$40,000 plus labor
- Complete landscaping, fencing, signage, conditional use permit – \$30,000
- Launch Compassion Enterprises – Food Truck – \$100,000

What can you do today?



- Sponsor a Tiny Home Materials or Build -Completion – 10 @\$10,000
- Assist with CUP for new zoning requirements being implemented by City of Sacramento
- Assist with ongoing Solar needs and upkeep
- Assist with designs and plans for building and new Tiny Home models
- Update downstairs Community Center/Flooring, Kitchen - \$40,000 plus labor
- Complete landscaping, fencing, signage, conditional use permit - \$30,000
- Launch Compassion Enterprises – Food Truck - \$100,000
- Assist with fundraising campaigns, marketing and media
- Submit a Tiny Home Design to AIA Competition benefitting E49 Foundation
- <https://aiacv.submittable.com/submit/133693/aia-central-valley-tiny-home-adu-competition>

WE CAN END HOMELESSNESS!



**AFFORDABLE HOUSING
SUSTAINABLE COMMUNITIES
SOCIAL ENTERPRISES
CROWD FUNDING
SCHOOLS
COMMUNITY ENGAGEMENT**

The information provided is the property of e49 Foundation
and should not be reproduced or copied without written
permission from The e49 Foundation.



Compassion Village
Tiny homes, Big dreams.



\$10,000 = 1 Home = 1 Life

www.Thee49Foundation.org www.CompassionVillage.org

Tammy Vallejo, President/Founder 916-849-4577