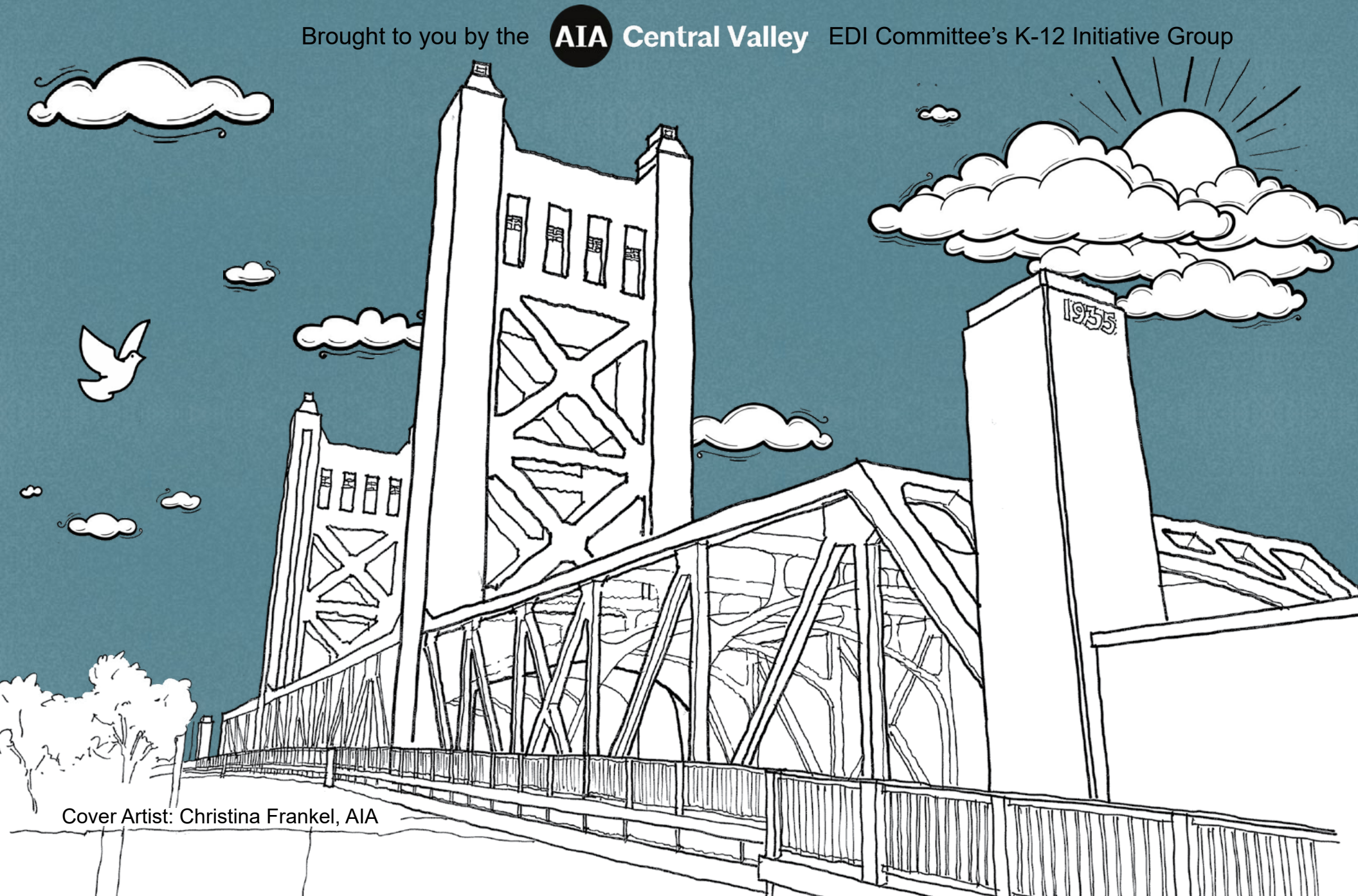


ARCHITECTURE COLORING BOOK

Brought to you by the **AIA** Central Valley EDI Committee's K-12 Initiative Group



Cover Artist: Christina Frankel, AIA

FAITH U.M. CHURCH

3600 J Street, Sacramento, CA 95816

Architect: Leonard Starks / Carter Sparks

Artist: Peter Saucerman, AIA



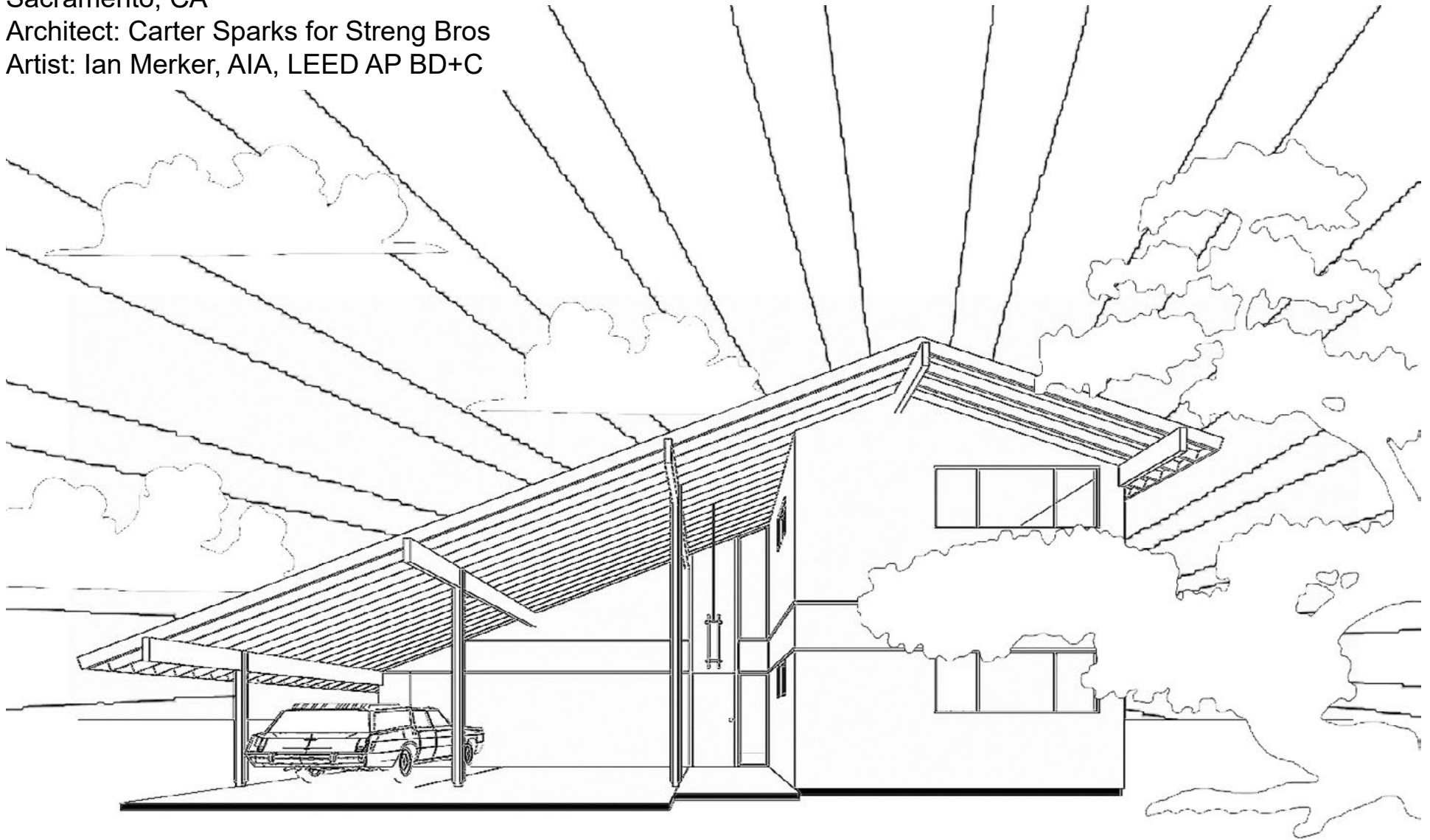
Originally the Fremont Presbyterian Church, designed by Leonard Starks in 1924.

STRENG BROS HOME PLAN 524

Sacramento, CA

Architect: Carter Sparks for Streng Bros

Artist: Ian Merker, AIA, LEED AP BD+C



This is a very rare two story mid-century modern house (Plan Number 524), designed by architect Carter Sparks for Streng Bros., homebuilders based in the Central Valley from 1957-1987. Did you know that before 2022, restrictive covenants were allowed to stay on property deeds? Restrictive covenants mean that some people are not allowed to buy a house because of their skin color or culture. Streng Brothers never had restrictive covenants on their homes, even at a time when it was common.

Fun Fact: The artist of this drawing, architect Ian Merker, lives in this house with his family.

CRAFTSMAN HIGHWATER BUNGALOW

Sacramento, CA

Artist: Justin Panson, Rainforth Grau Architects



This is a historic bungalow style home built in 1918, which architect Justin Panson currently lives in.

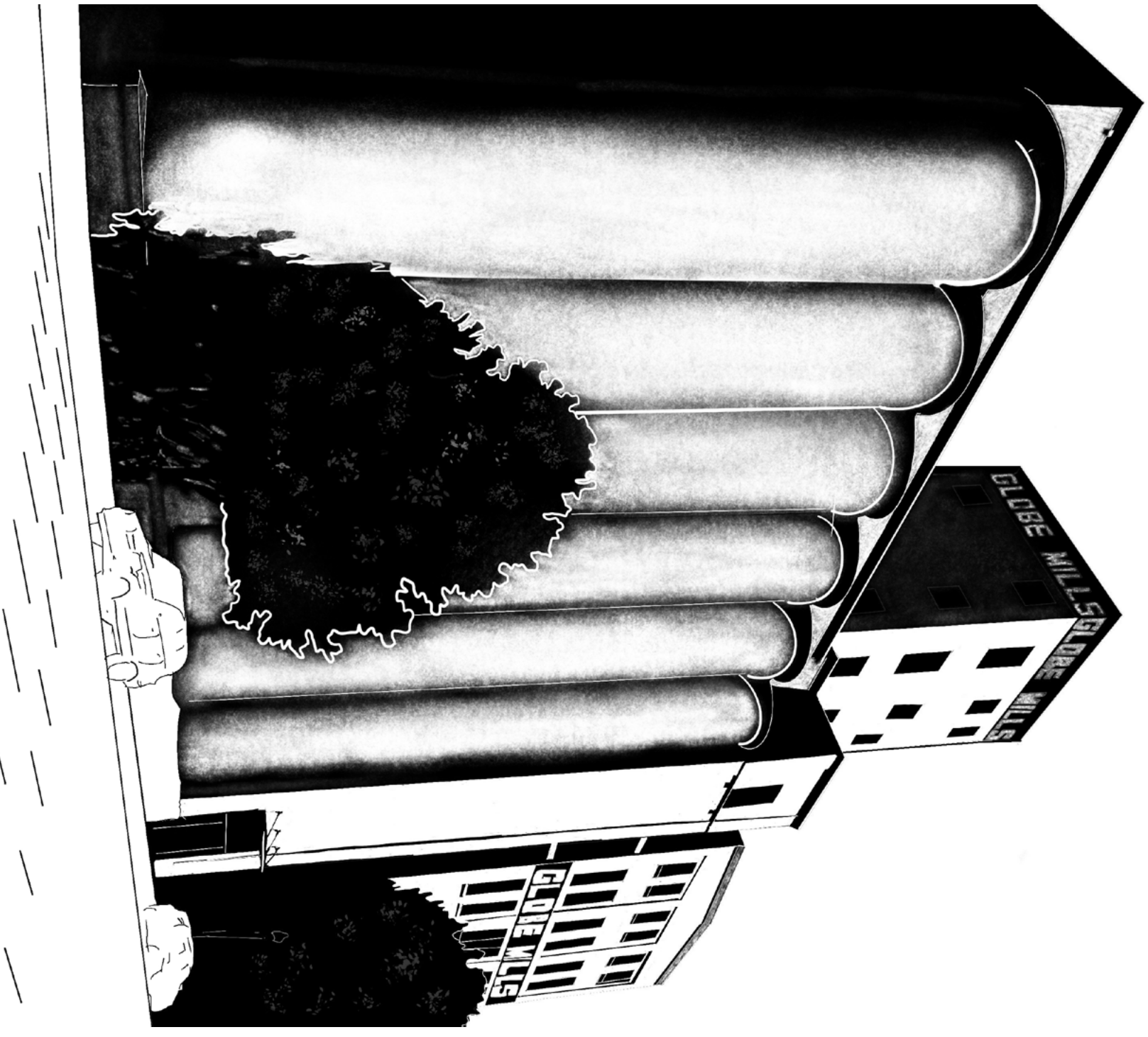
Fun Fact: He celebrated its 100th birthday!

GLOBE MILLS

Sacramento, CA (Alkali Flats Neighborhood)

Architect: Applied Architecture, Inc.

Artist: Megan Repka, AIA, SEED AP



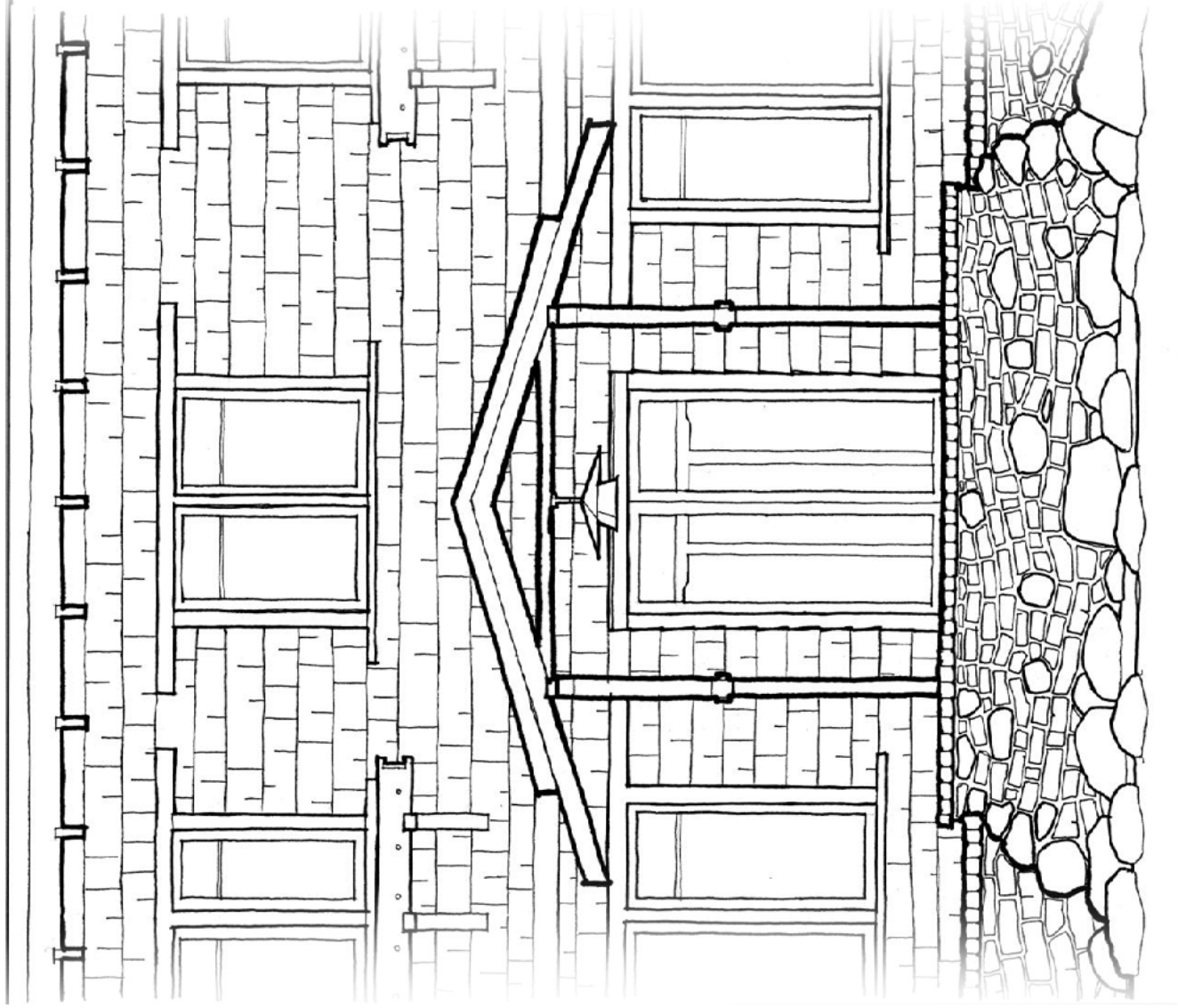
Globe Mills is located in the Alkali Flats Neighborhood of Sacramento. The now loft building is an adaptive reuse of a flour and barley mill. The original building was built in the late 1800s and the renovation was done by Applied Architecture, Inc.

JOHN T. GREENE HOUSE

Sacramento, CA

Architect: Greene and Greene

Artist: Patty Karapinar, AIA, LEED AP BD+C, WELL AP



The John T. Greene House was designed in 1913 by the Pasadena, California architectural firm of Greene and Greene. John T. Greene was a Sacramento developer not related to the architects. This historic wooden bungalow is a primary example of the American Arts and Crafts Movement. Its many custom, handcrafted details gracefully express the structure of the home, inspired by the joints, pegs and framing of traditional Japanese architecture.

Fun Activity: See if you can find a part of the front doors that remind you of a cloud.

WATER SKI HOUSE

Sacramento, CA

Architect: Sigerson Architects

Artist: Saxon Sigerson, AIA



This house in Sacramento has been a great delight to design for this family of four. They are all competitive water skiers with a love of modern architecture.

LIONAKIS HEADQUARTERS

2025 19th Street, Sacramento, CA

Architect: Lionakis

Artist: Lionakis Graphics Team



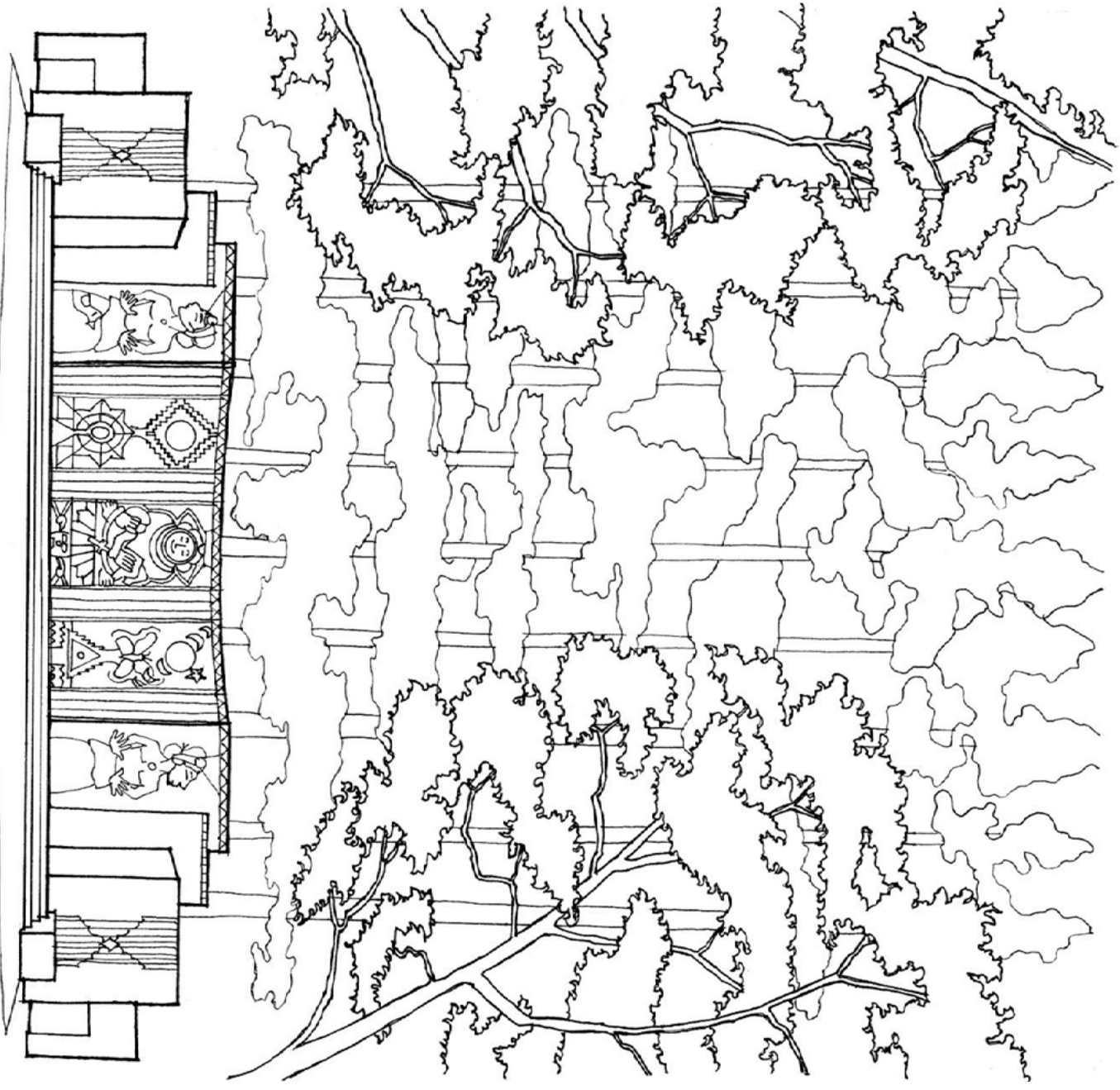
The historic, 40,000 square foot building was originally home to the Weaver Tractor Showroom and more recently divided into multiple tenant suites with typical nine-foot lay-in ceilings hiding the enormous potential of the space. Lionakis turned it once again into a single space, exposing four original barrel vaults, including the largest volume, with 32 foot-high ceilings, that have become the major studio space.

SOUTHSIDE PARK STAGE

Southside Park, Sacramento, CA

Architect: Rudolph Herold and George Randle (City Engineer)

Artist: Patty Karapinar, AIA, LEED AP BD+C, WELL AP



SOUTHSIDE PARK

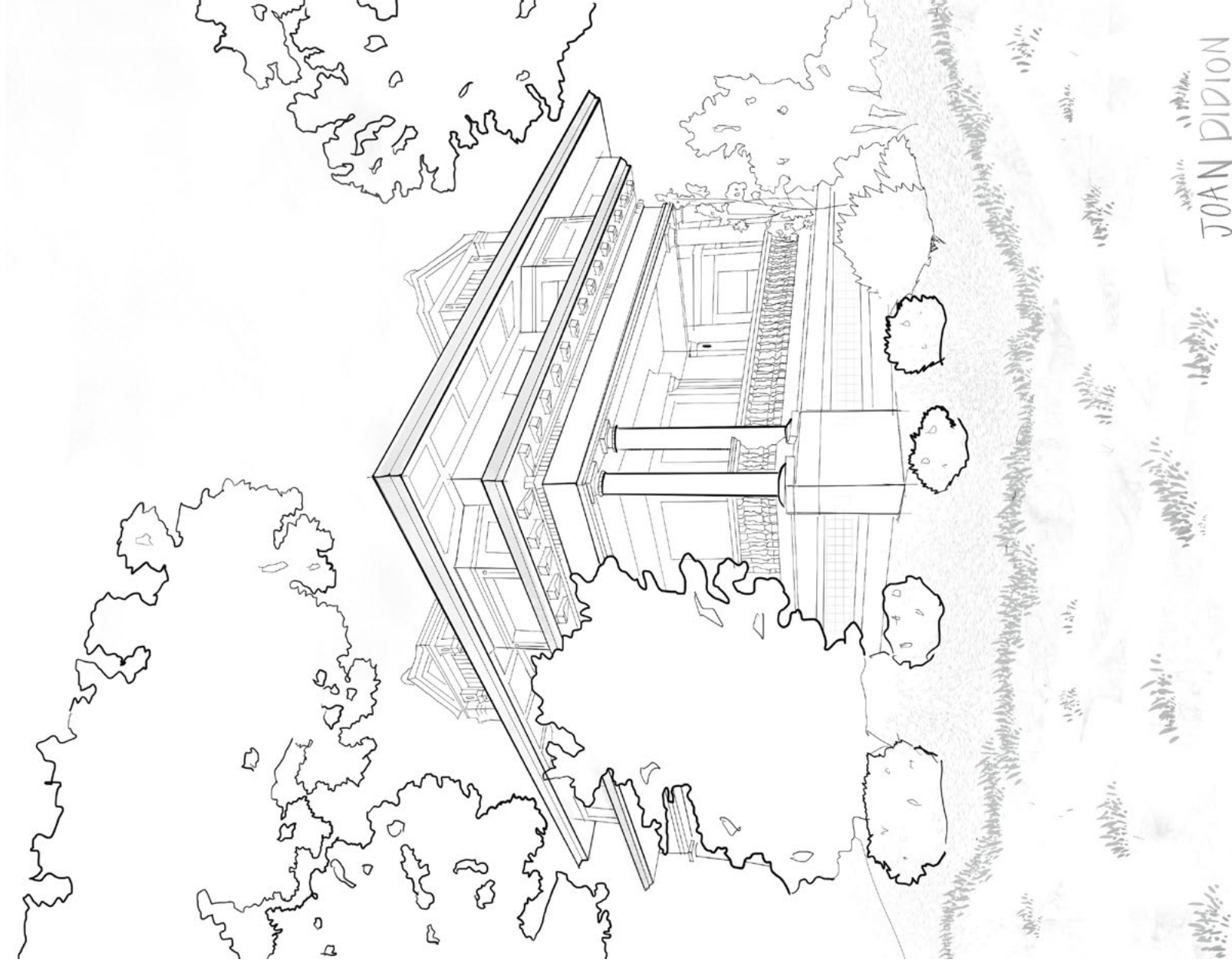
The Southside Park Stage, located in the 19.5 acre Southside Park in the South Side Historic District of Sacramento, was built by the Civil Works Administration (CWA). Southside Park was designed in the early 1900s by architect Rudolf Herold and city engineer George Randle, and is on the National register of Historic Places. The vibrant Mexican themed mural panels later painted on the stage walls were each designed and painted by a different artist and celebrate the historically inclusive, multicultural Southside neighborhood.

DIDION HOME

2000 22nd Street, Sacramento, CA

Architect: Seadler & Hoen

Artist: Megan Repka, AIA, SEED AP



JOAN DIDION

This coloring page features well-known author Joan Didion's former residence in the Poverty Ridge Neighborhood in Sacramento which she referred to as a "wedding cake." Originally designed by the architectural firm Seadler & Hoen in 1911.

CALIFORNIA STATE CAPITOL

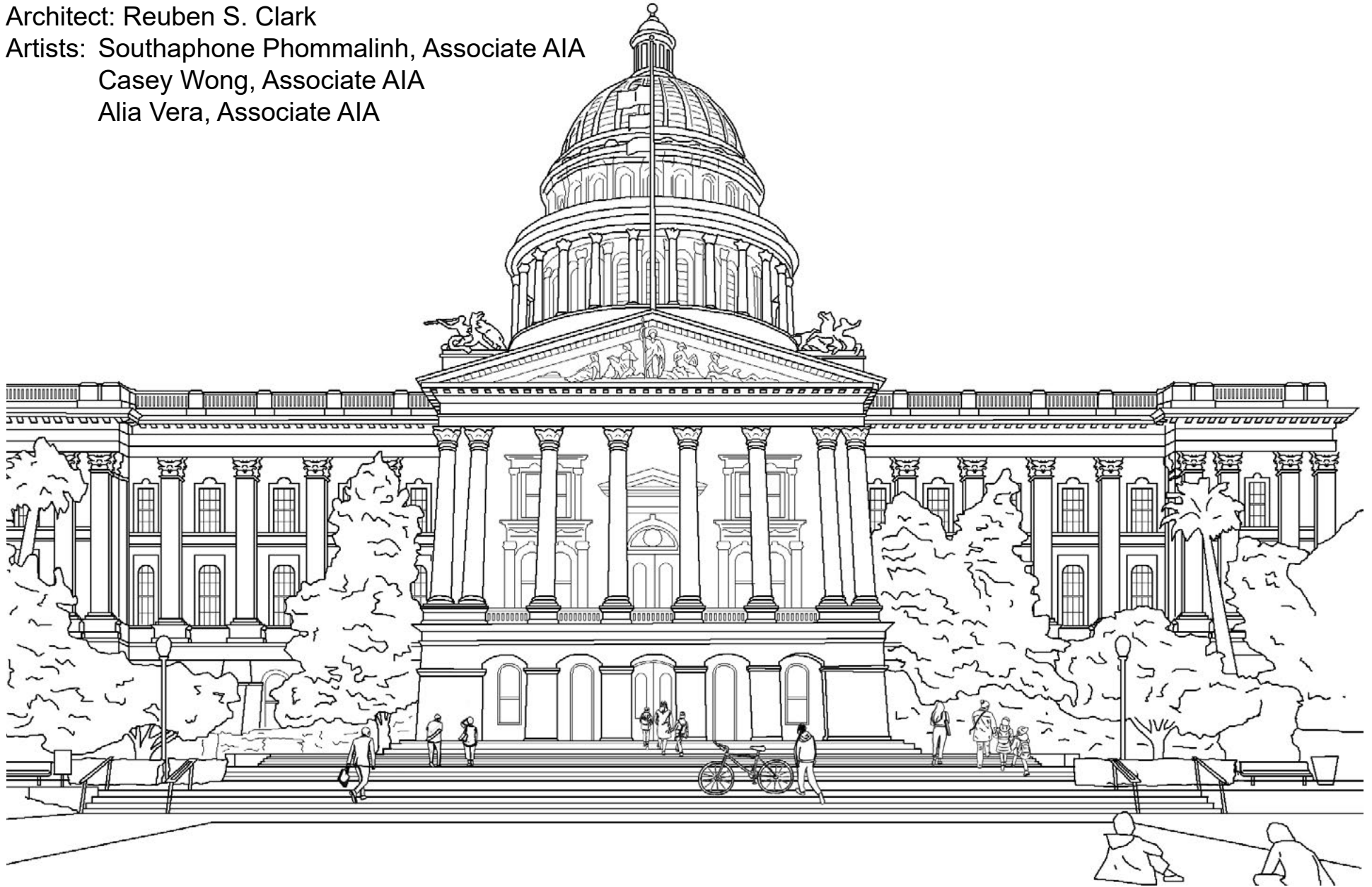
1315 10th Street, Sacramento, CA 95814

Architect: Reuben S. Clark

Artists: Southphone Phommalin, Associate AIA

Casey Wong, Associate AIA

Alia Vera, Associate AIA



The Capitol's Neoclassical structure, designed by Reuben S. Clark, was completed between 1861 and 1874. Located at the west end of Capitol Park and the east end of the Capitol Mall, the building was added to the National Register of Historic Places in 1973.

KIMPTON SAWYER HOTEL

500 J Street, Sacramento, CA 95814

Architect: House & Robertson Architects, Inc.

Artists: Casey Wong, Associate AIA; Southphonne Phommalin, Associate AIA



An urban haven surrounded by great shopping, art galleries, renowned restaurants and farmer's markets, the Kimpton Sawyer Hotel embraces the surrounding natural and historic heritage with designs that include organic textures, natural patterns, and abundant open-air spaces. This hotel is a breath of fresh air in the center of our burgeoning city.

WAT LAO BUDDHARANGSY

3819 Service Road, Ceres, CA 95307

Architects: Local Carpenters/Volunteers

Artist: Southaphone Phommalin, Associate AIA



Wat Lao Buddharing Sy is a Lao Buddhist temple that is central to the Lao community of Stanislaus County. Built by local carpenters, expert craftsmen and volunteers, this Wat (Lao temple) is not only used for religious purposes, but often as a community center to celebrate Lao culture.

THE ZIGGURAT

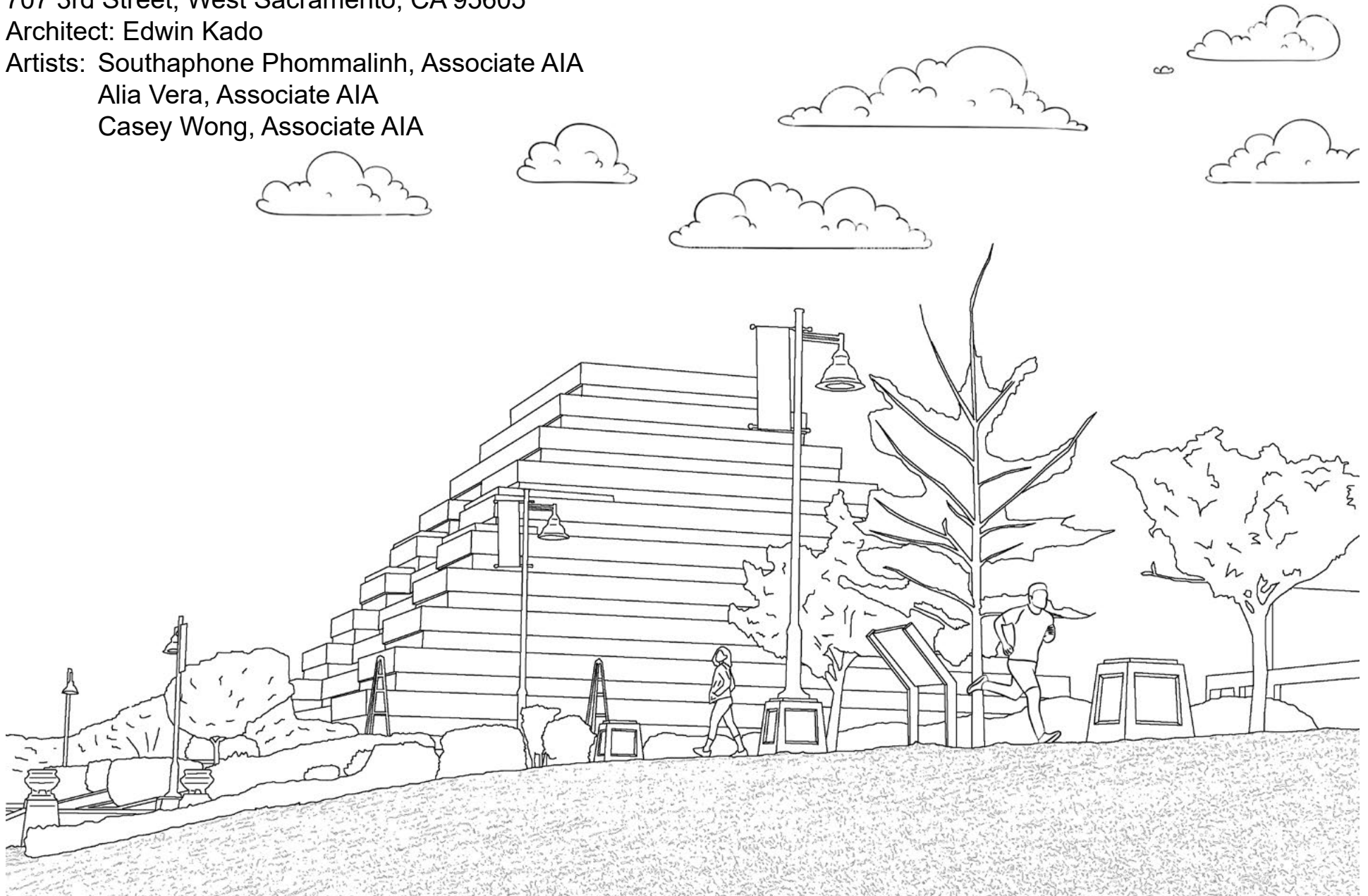
707 3rd Street, West Sacramento, CA 95605

Architect: Edwin Kado

Artists: Southphone Phommalin, Associate AIA

Alia Vera, Associate AIA

Casey Wong, Associate AIA



Designed to resemble the massive, ancient ziggurats in the Mesopotamian Valley, this building, located on the Sacramento River, was constructed by the Money Store in 1997 and was subsequently leased by the California Department of General Services as its headquarters building.

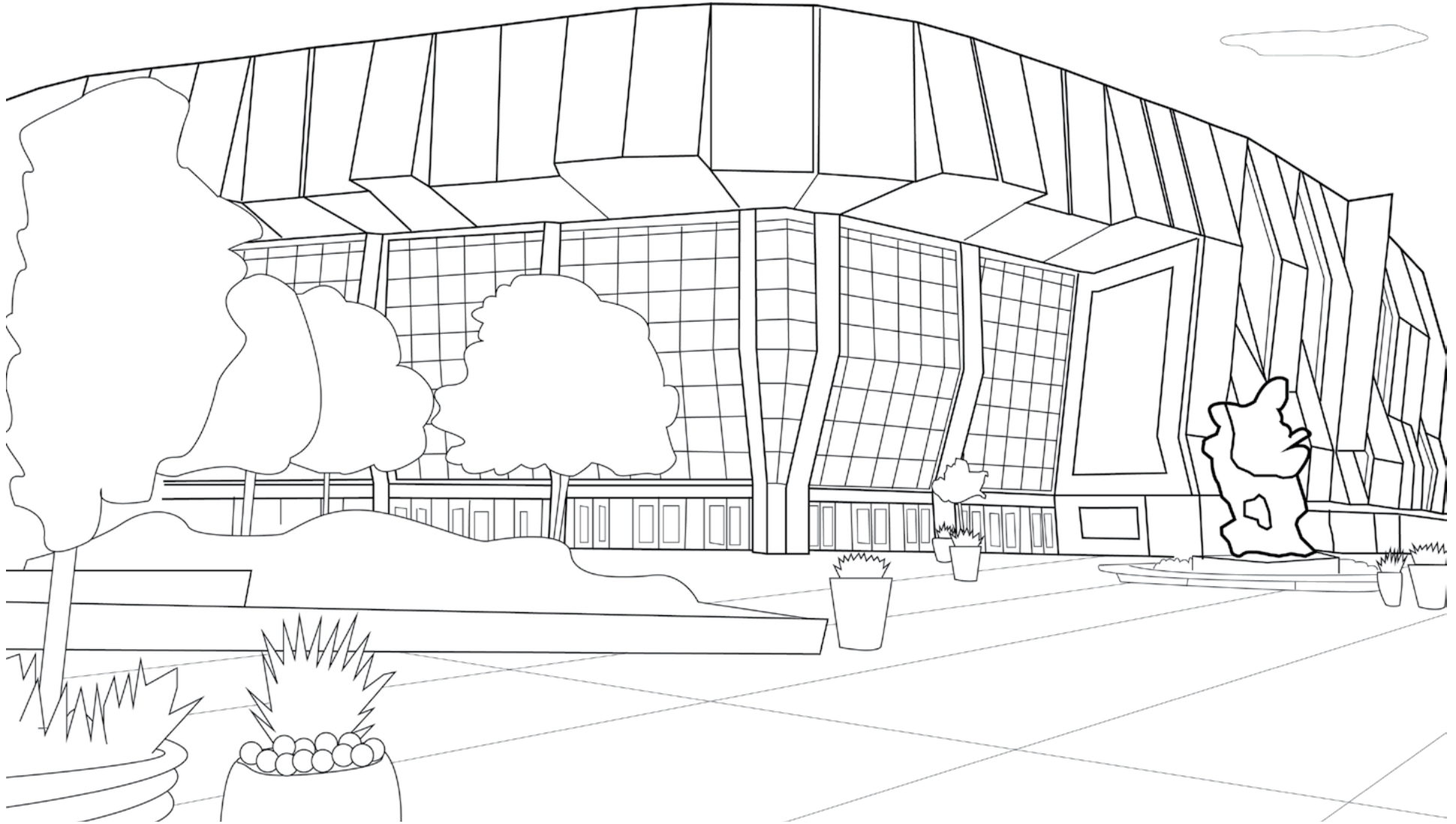
GOLDEN 1 CENTER

500 David J Stern Walk, Sacramento, CA 95814

Architect: AECOM / Mark Dziewulski Architect

Artists: Alia Vera, Associate AIA

Casey Wong, Associate AIA



Golden 1 Center is an indoor arena which replaced Sleep Train Arena as the home of the Sacramento Kings Basketball team. The venue hosts concerts, conventions and other sporting and entertainment events.

TOWER BRIDGE

Sacramento, CA

Architect: Alfred Eichler

Artist: Ankita Gandhi



Tower Bridge is also known as the M Street Bridge. For years, the bridge was painted with a silver aluminum paint under a special work order, but people complained about glare off the bridge. In June 1976, as part of Bicentennial projects, it was painted a yellow-ochre color to match the gold leafed cupola on the nearby State Capitol.



Alia Vera, Associate AIA

is a Peruvian Architectural Designer with Boulder Associates, where she's been for the last 8 years focusing on healthcare design. As a volunteer in the AIACV Equity Diversity & Inclusion Committee, Habitat for Humanity, and Western Service Workers Association, she learns about the various privileges and disadvantages we all have, and hopes for a more equitable and diverse community.



Ankita Gandhi

is an Architecture Job Captain at LPAS Architecture + Design. Born and raised in India, she moved to the US to pursue her Master's in Architecture and graduated in 2019. Ankita's hobbies include sketching, painting, dancing, and exploring big cities. She is also a nature lover.



Casey Wong, Associate AIA

(They/Them) is an architectural designer with Stantec, dedicated to designing a more equitable and just world. As an AIACV Equity Diversity & Inclusion Committee Co-Chair, they advocate and nurture equitable and inclusive spaces for marginalized communities. Casey also mentors youth in CREATE, a program that exposes youth to the architecture, construction, engineering, and trades industries. Casey played a major role in developing this coloring book.



Christina Frankel, AIA

is a Senior Architect at RGA+ a studio of HMC Architects, specializing in education facilities. Her recent projects include high schools, including a new gym and modernization of a historic gym. Christina is a maker, she is learning to weld, and is passionate about learning. She loves to kayak and travel, and is married to an Aussie with three amazing, independent, adult daughters. Christina played a major role in developing this coloring book.



Ian Merker, AIA

is the Associate Vice President of CannonDesign. He lives with his family in the Streng Bros Home Plan 524.



Justin Panson

is the Senior Marketing Manager for the Sacramento office of RGA+ A Studio of HMC Architects. He has over 20 years of experience in graphic design, copywriting, strategizing, and branding communications. He's worked to tell the creative story of education architecture since 2018.



Megan Repka, AIA

is a Project Architect for Architectural Nexus, Inc. and is the chair of the firm's Social Equity Committee. She grew up near Sacramento and has always admired the tree lined streets and beautiful historic architecture. She especially admires the beautiful Didion Home and the influential woman that lived there.



Patty Karapinar, AIA

is an architect and the Director of Sustainability at Architectural Nexus. Patty grew up in the redwoods, and appreciates the many elements of Greene and Greene's homes made from redwood. Patty often takes lunchtime walks around Southside Park and stage.



Peter Saucerman, AIA

is a former partner at Dreyfuss & Blackford Architecture, and is now a full-time urban sketcher. He once worked for Nacht & Lewis (founded by Leonard Starks) and presently lives in the house Leonard built for himself. He pops up everywhere in Sacramento.



Saxon Sigerson, AIA

is a sole practitioner architect who was a carpenter before attending the University of Southern California Architecture School. In addition to designing a wide range of projects, he is passionate about keeping the ideas of architecture alive. This takes the form of teaching high school students, leading drawing safaris and reading books about the techniques used by Romans to create concrete vaults.



SP (Southphone Phommalinh), Associate AIA

has a degree in architecture from UC Berkeley and works in the Marketing and Business Development department of LPAS Architecture + Design. She is a member of the AIACV Equity Diversity & Inclusion Committee, and played a major role in developing this coloring book. SP thrives on positive energy and draws inspiration from acts of kindness.

THANK YOU TO OUR ARTISTS

THANK YOU TO OUR FIRM SPONSORS



ARCH | NEXUS

Architectural Nexus is a multi-disciplinary, people-driven design firm practicing throughout the western United States. At Arch Nexus we focus on design for people. Our projects create places that not only work well, but also help people be healthy, happy and productive. Through purposeful design, people are enabled and inspired to achieve greatness as well as become active stewards of the built and natural environments. By design, we are creating a better world for us to share.



Lionakis designs places that influence the fabric of our region. For over 100 years, Lionakis has continued to shape a better future for our clients, our employees, and our community. We create learning environments, healing spaces, and workplaces where people flourish—providing design that matters.



Rainforth Grau Architects began serving education clients over 35 years ago. The practice is based on a passion for schools and the students they serve, striving to create solutions that engage and inspire, and make a real impact and a positive difference. RGA's recent acquisition by HMC Architects combines experience, resources, and infrastructure to create one of the largest Pre-Kindergarten-12 architectural practices in Northern California.

HMC Architects was founded in 1940 with a mission to serve the greater good. HMC works exclusively on education, health, and civic projects that serve its communities. Nationally, HMC is ranked in the top-ten design firms providing educational design services, and works globally to create forward-looking, sustainable building projects.



This coloring book is brought to you by the AIA Central Valley K-12 Initiative Group of the Equity Diversity & Inclusion Committee, Co-Chairs Casey Wong, Associate AIA and Christina Frankel, AIA, in addition to committee members Alia Vera, Associate AIA, Celia Yniguez and SP (Southphone Phommalin), Associate AIA.

Special thanks goes out to the AIA Central Valley's Executive Director Kimberly Anderson, Hon AIA CA, and to Programming and Communications Coordinator Jacy A. Boles.

Visit our website: <https://aiacv.org/edi/> or email us at info@aiacv.org.

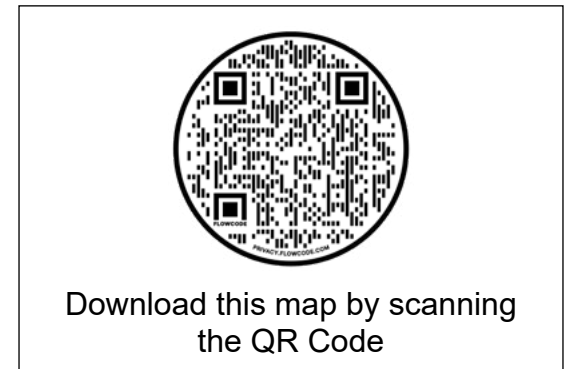
LOCATIONS OF BUILDINGS AS SHOWN IN DRAWINGS



Sacramento, California



California Counties



1. Globe Mills
2. The Ziggurat
3. Tower Bridge
4. Kimpton Sawyer Hotel
5. Golden 1 Center
6. California State Capitol

7. Southside Park Stage
8. Lionakis Headquarters
9. Didion Home
10. John T. Greene House
11. Faith U.M. Church

Buildings not shown on map:

- Craftsman Highwater Bungalow (Sacramento County)
- Streng Bros Home Plan 524 (Sacramento County)
- Wat Lao Buddharangsy (Stanislaus County)
- Water Ski House (Sacramento County)